

# Omnibus Territory Plan Variation Block 2 Section 28 Greenway

Presentation to  
Tuggeranong Community Council  
Tuesday 5 August



**ACT**  
Government

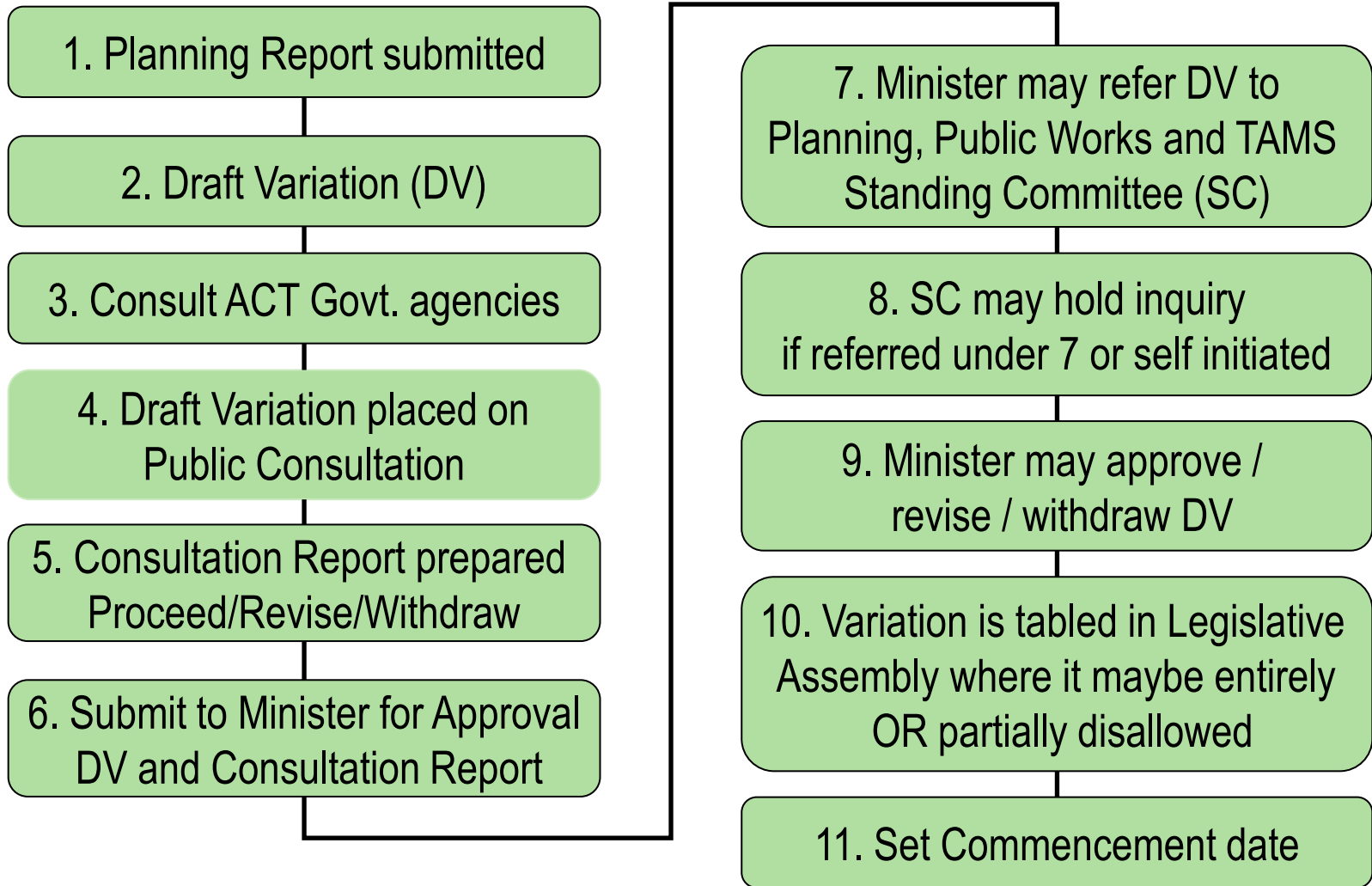
# AGENDA

- **Omnibus Territory Plan Variation explained**
- **Statutory Planning process**
- **Block 2 Section 28 Greenway details**
- **Next steps**

# Omnibus Territory Plan variation

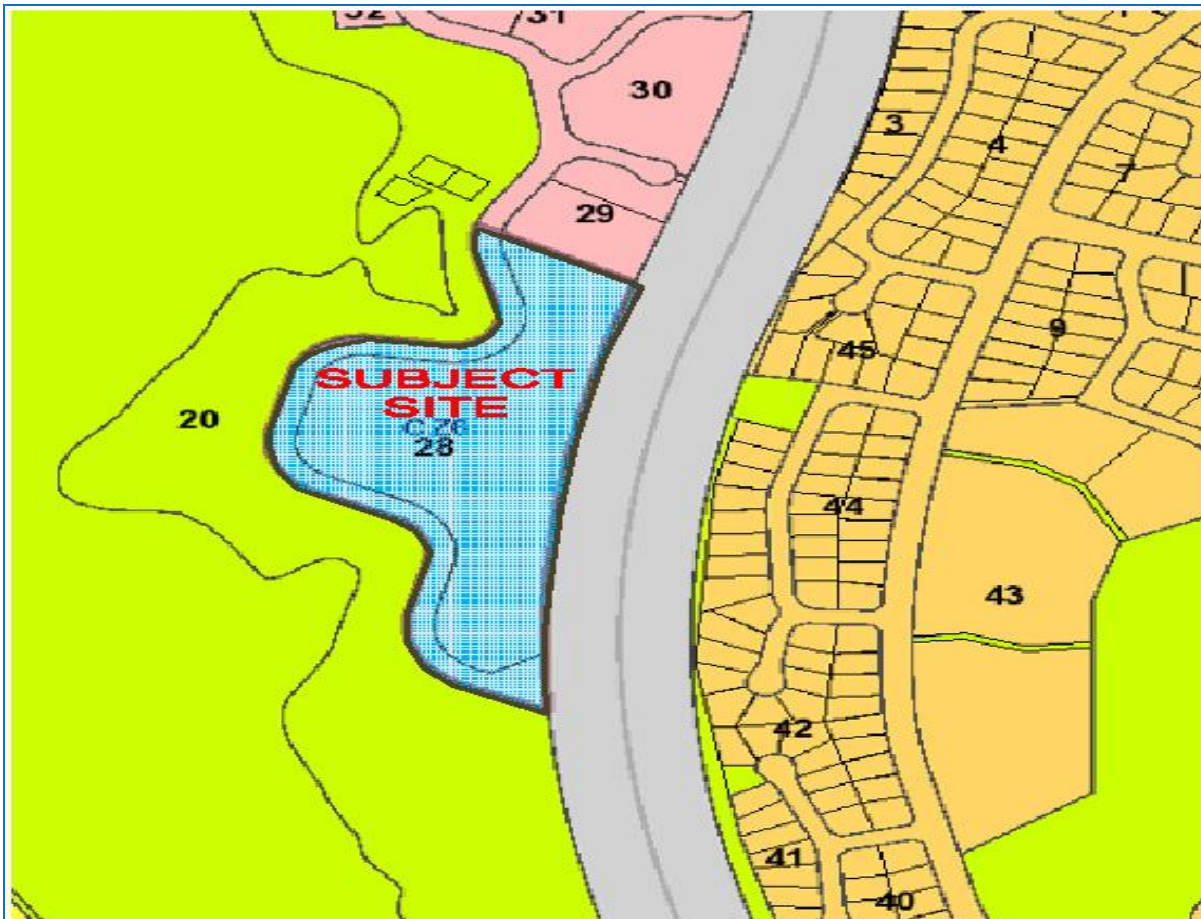
- **Combines separate Territory Plan variations within one document**
- **Seeking to revitalise the public housing portfolio**
- **Land release program relies on the zoning of some sites being varied**
- **Information will be provided so that people understand the policy objectives**
- **Community input will help inform how the land is developed**
- **If a draft Territory Plan Variation proceeds there will be further opportunities for engagement**

# Statutory Planning Process





**ACT**  
Government



**Legend**

- |  |   |
|--|---|
|  Residential - RZ2 - Suburban Core            |  Transport and Services - TSZ1 - Transport             |
|  Residential - RZ1 - Suburban                 |  Urban Parks and Recreation - PRZ1 - Urban Open Spaces |
|  Commercial - CZ6 - Leisure and Accommodation |   |





SITE: BLOCK 2 SECTION 28 GREENWAY  
 SITE AREA: 44,645m<sup>2</sup>  
 CURRENT ZONING: C26 LEISURE AND ACCOMMODATION  
 DISTANCE TO TUGGERANONG TOWN CENTRE: 1.2km (BY PATH)  
 DISTANCE TO TUGGERANONG TOWN CENTRE: 2.8km (BY ROAD)  
 DISTANCE TO KAMBAH SOUTH CENTRE: 1.9km (BY ROAD)

**NOTES**

- (1) BLOCK BOUNDARIES AND CONTOURS - APPROXIMATE ONLY
- (2) 1m CONTOUR INTERVAL
- (3) AIR PHOTO SOURCE: www.nearmap.com (29 DECEMBER 2017)



Purdon Associates Pty Ltd, 3/9 McKay Street, Turner ACT 2612  
 ABN: 20 008 810 093, Tel: 02 6287 1311, Fax: 02 6288 0347  
 Email: purdon@purdon.com.au, Web: www.purdon.com.au

**GREENWAY BLOCK 2 SECTION 28  
 BASE PLAN - SITE CHARACTERISTICS**

**LEGEND**

- |  |                |  |                         |
|--|----------------|--|-------------------------|
|  | BLOCK BOUNDARY |  | FALL OF LAND            |
|  | MAJOR AXIS     |  | VIEWS OUT               |
|  | PATHWAY        |  | FLOODWAY                |
|  | EXISTING TREES |  | POTENTIAL TRAFFIC NOISE |





**ACT**  
Government



# NEXT STEPS & HOW TO PROVIDE FEEDBACK

- ACT Government to continue engaging with broader community i.e. letterbox drop
- A copy of this presentation will be available at [www.economicdevelopment.act.gov.au](http://www.economicdevelopment.act.gov.au)
- Provide comments to [EDDCommunity@act.gov.au](mailto:EDDCommunity@act.gov.au)
- If the TPV proceeds, engagement opportunities will be advertised and the Community Council will be informed
- Report on outcomes